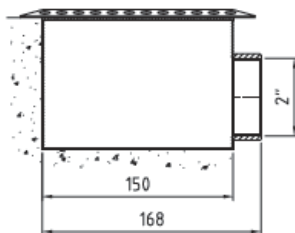
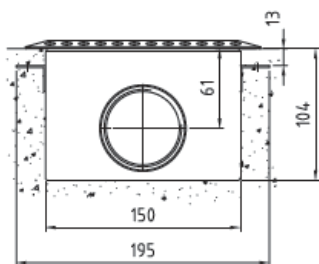
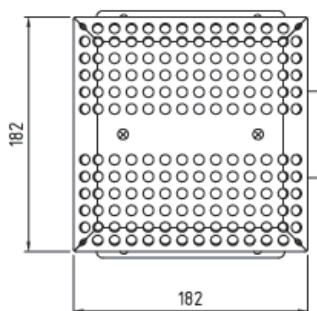


# Valuosat

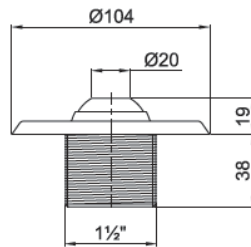
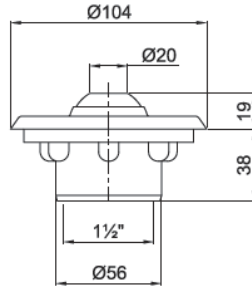
## Pohjakaivo

- Polished front grating - For optimum finish.
- Acid-resistant stainless steel AISI 316L - For optimum quality and life.
- Can be fitted in pools made of concrete, liner or building-block walls - Suits all types of pool.

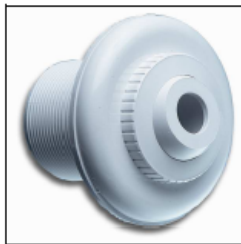


- Plastic**
- Bottom outlet with grid concrete
  - Bottom outlet with grid - liner
  - Bottom outlet with grid concrete
  - Bottom outlet with grid - liner
  - Grid for bottom outlet 229 x 229 mm
  - Grid for bottom outlet 250 x 250 mm
  - Grid for bottom outlet 457 x 457 mm

## Tulosuuttimet / Läpiviennit



- **Polished front** - For optimum finish.
- **Acid-resistant stainless steel AISI 316L and bronze** - For optimum quality and life.
- **Adjustable jets** - Can be adjusted to suit individual requirements.
- **Can be fitted in pools made of concrete, liner or building-block walls** - Suits all types of pool.



### Plastic

Inlet nozzle w/ball Ø19 mm

1 1/2" inside thread - liner

Inlet nozzle w/ball Ø19 mm

1 1/2" inside thread - concrete

Inlet adjustable

2" inside – liner and concrete

## Pintaventtiilit



- **Acid-resistant stainless steel AISI 316L** - For optimum quality and life.
- **Vertically adjustable collar** - Can be adjusted to suit different pool decks.
- **Flap lid made of stainless steel** - Stable and corrosion-resistant.
- **Polished, pattern-rolled cover** - For optimum finish. Sturdy cover that can take the weight of a person walking on it.
- **Equipped with large, high-capacity filter basket** - Easy to clean leaves and dirt when necessary.
- **Connection for water level control** - For automatic filling of water in the event of insufficient water level.

